

QUICK START GUIDE: MICRON+ PUMP SERIES



Warning: Risk of electrical shock. carelessness may produce injury or death.



Warning: Hot zone with high temperatures. Risk of burns. Use thermal protective equipment.



Warning: System under pressure. Risk of burns or particle projection. Use thermal protective equipment and goggles.



Warning: Important information for the correct use of the system. may include one or several of the previous hazards, and therefore must be kept in mind to avoid damage and injury.

Warning: The **micron+ series** melters are equipment with current technology and with certain foreseeable risks. Therefore, only allow qualified personnel with sufficient training and experience to use, install or repair these equipment.

In case of doubts in the moment of installation, refer to the corresponding instructions manual.

If you want this guide in other language, see the website:
<https://www.meler.eu>

meler  **Focke Meler Gluing Solutions, S. A.**
P.I. Arazuri-Orkoien, c/B, nº3 A
E - 31170 Arazuri - Navarra - Spain
Tel.: + 34 948 351 110
e-mail: info@meler.eu
www.meler.eu

— Focke Group —



MA-5162-ENG V0121

1. COMPONENTS OPTIONS AND ACCESSORIES



2. DIMENSIONS/FREE SPACE



ITEM	DESCRIPTION	DIMENSIONS
A	MELTER LENGTH	5L 587 mm
		10L 671 mm
		20L 671 mm
		35L 738 mm
B	MELTER WIDTH	5L 341 mm
		10L 341 mm
		20L 382 mm
		35L 435 mm
C	MELTER HEIGHT	5L 481 mm
		10L 481 mm
		20L 524 mm
		35L 673 mm
D	MELTER HEIGHT WITH LID OPEN	5L 628 mm
		10L 760 mm
		20L 875 mm
		35L 1067 mm
E	MELTER LENGTH WITH ELECTRICAL CABINET DISPLACED	5L 838 mm
		10L 921 mm
		20L 921 mm
		35L 992 mm

3. MELTER FIXATION



	MICRON+ 5	MICRON+ 10	MICRON+ 20	MICRON+ 35
A	92 mm	122 mm	122 mm	128,5 mm
B	--	55 mm	55 mm	--
C	381 mm	381 mm	381 mm	577 mm
D	571 mm	655,5 mm	654,5 mm	728 mm
E	49 mm	49 mm	49 mm	12 mm
F	249 mm	249 mm	249 mm	286 mm
G	334 mm	334 mm	334 mm	428,5 mm

4. ELECTRICAL POWER CONNECTION



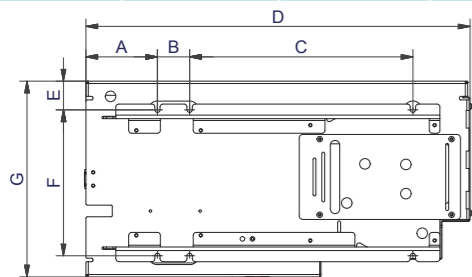
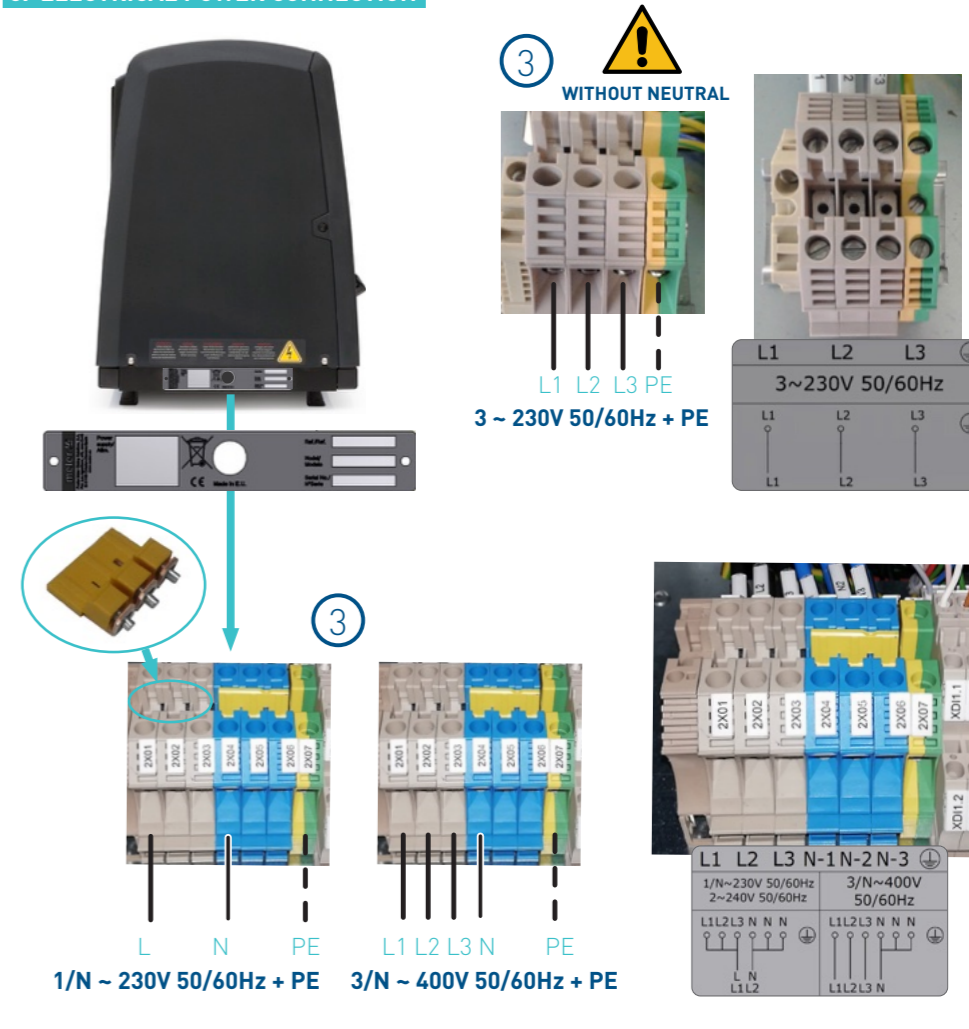
Maximum current allowed is 27 A per phase. In the following table it is shown maximum current consumption if you are using the maximum power allowed. You must to estimate the power needed in your particular installation to choose the right connection.

1/N~230V 1- 50/60Hz + N + PE (Not recommended, except micron+ 5. Not available MICRON+ 35)
3/N~400V 3- 50/60Hz + N + PE (Limited for micron+ 35)
3 ~ 230V 50/60Hz + PE (terminals connection of 10 mm²)

MELTER	N.º OUTPUTS	1 PHASE			3 PHASES		
		230 VAC	230 VAC Δ	400 VAC Y	230 VAC	230 VAC Δ	400 VAC Y
micron+ 5	2	25,65 A	18,10 A	10,00 A			
	4	27,00 A (!)	26,00 A	15,65 A			
	6	27,00 A (!)	38,90 A	23,48 A			
micron+ 10	2	27,00 A (!)	25,90 A	14,35 A			
	4	27,00 A (!)	26,00 A	15,65 A			
	6	27,00 A (!)	38,90 A	23,48 A			
micron+ 20	2	27,00 A (!)	29,80 A	16,52 A			
	4	27,00 A (!)	29,80 A	16,52 A			
	6	27,00 A (!)	38,90 A	23,48 A			
micron+ 35	2	-	41,60 A	18,70 A			
	4	-	41,60 A	26,52 A			
	6	-	41,60 A	27,00 A (!)			



5. ELECTRICAL POWER CONNECTION



6. PNEUMATIC AND HOSE CONNECTION



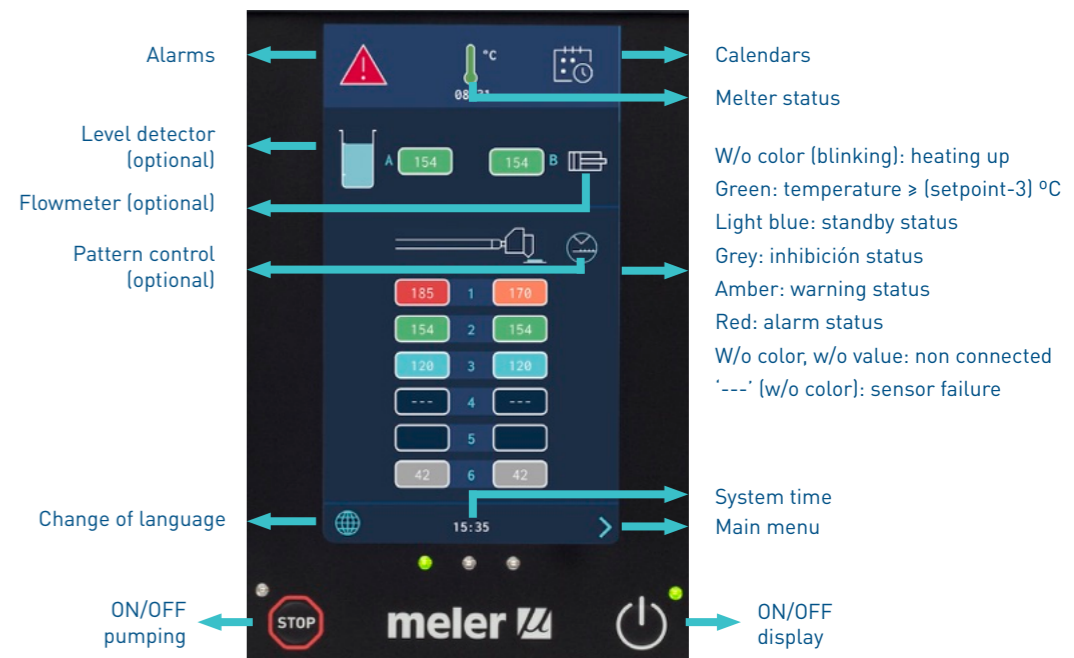
7. MAXIMUM ADHESIVE LOAD



8. START UP OF THE MELTER



9. CONTROL BOARD: MAIN SCREEN (DATA DISPLAY AND MENU ACCESS)

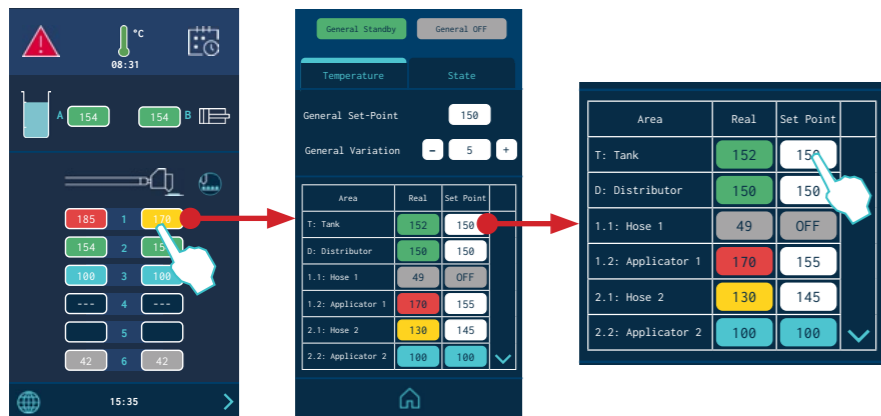


10. LANGUAGE SELECTION



11. ENTERING SET POINT AND STANDBY TEMPERATURES

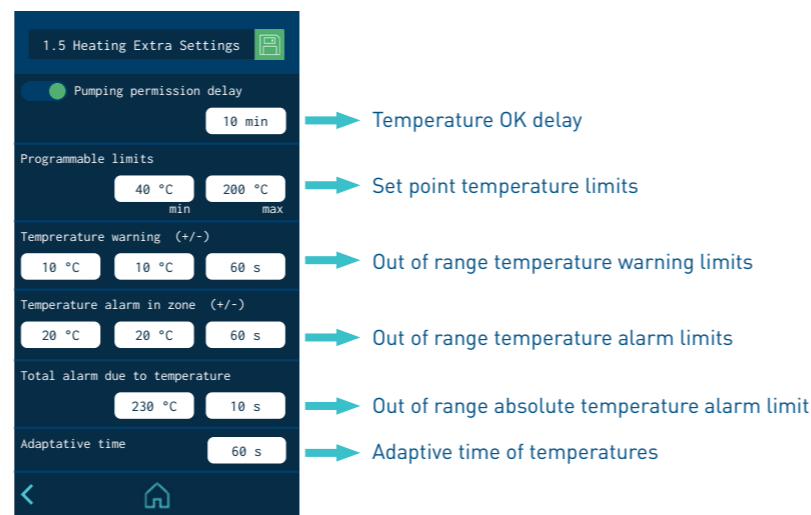
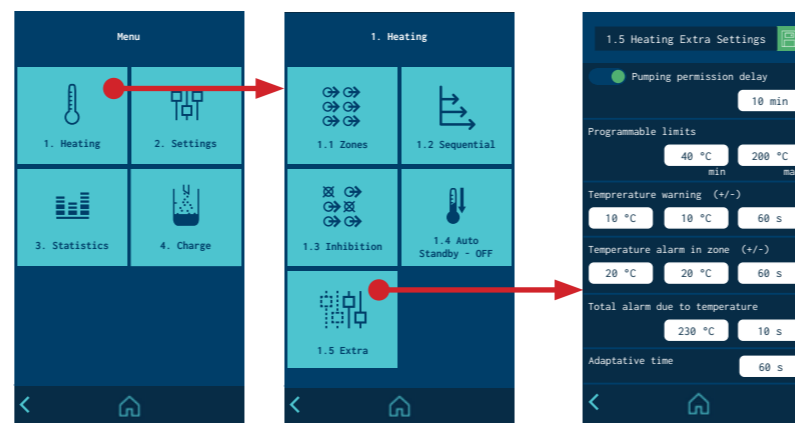
> Shortcut to setpoint temperatures



> Access through selection menu



12. ENTERING WARNING AND ALARM TEMPERATURE VALUES



13. EXTERNAL INPUT/OUTPUT CONNECTIONS (OPTIONAL)



> Inhibition external control (7 possible groups)



> External Inputs/Outputs (according to options)



Warning: The PID values are directly involved in the heating process. Do not modify these values if you do not have the necessary technical knowledge or without the advice of the Focke Meler Technical Service.